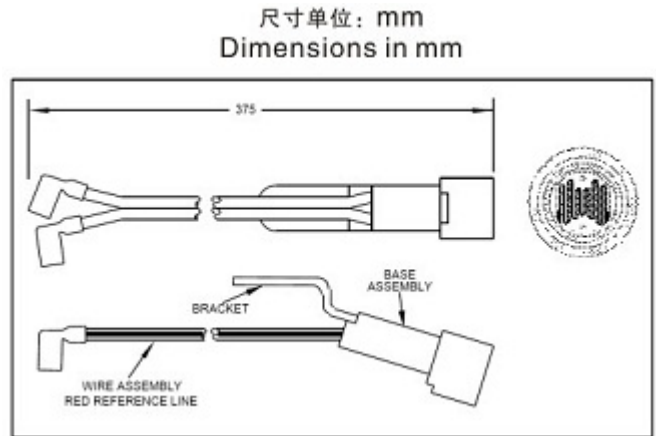
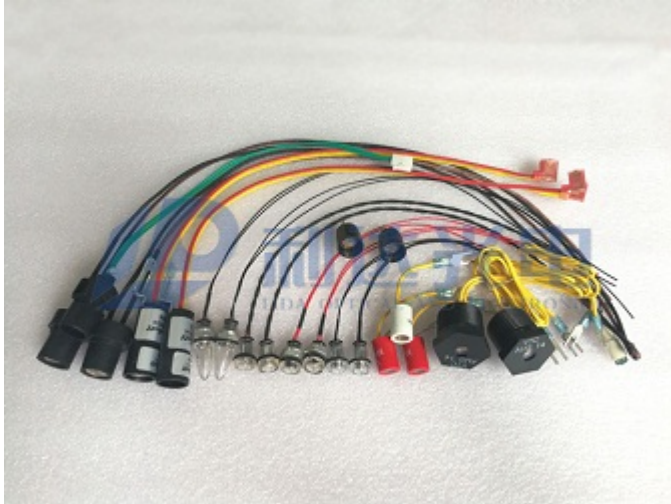


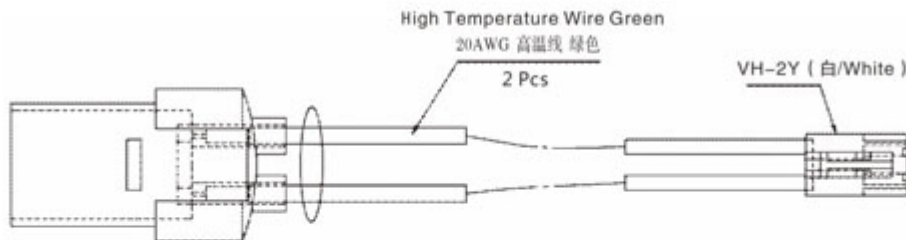
光电组件系列 Photo-Electronic Assemblies Series



25°C电参数值 ELECTRO-OPTICAL CHARACTERISTICS @ 25°C

| 参数 Parameter | 最小值 Min. | 典型值 Typ. | 最大值 Max. | 单位 Units | 测试条件 Test Conditions |
|----------------------|-------------|-------------|-------------|-------------|-------------------------------|
| 亮电阻 Light Resistance | | | 1000 | Ω | 2 ftc. @ 2850 °K |
| 亮电阻 Light Resistance | 4 | | 10 | K Ω | 0.1 ftc. @ 2850 °K |
| 暗电阻 Dark Resistance | 100 | | | K Ω | 10 sec after removal of light |
| 光谱范围 Peak Wavelength | 520 | | 560 | nm | |

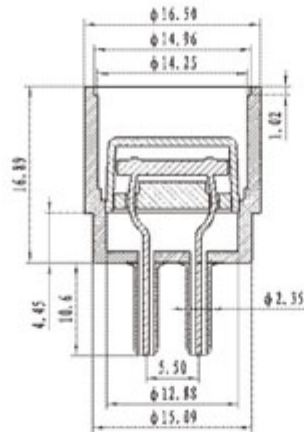
LD-PEA-11W



25°C参数值 ELECTRO-OPTICAL CHARACTERISTICS @ 25°C

| 参数 Parameter | 最小值 Min. | 典型值 Typ. | 最大值 Max. | 单位 Units | 测试条件 Test Conditions |
|----------------------|-------------|-------------|-------------|-------------|-------------------------------|
| 亮电阻 Light Resistance | 11 | | 16 | K Ω | 10Lux. @ 2856 K |
| 暗电阻 Dark Resistance | 1 | | | M Ω | 10 sec after removal of light |

NSL-11973

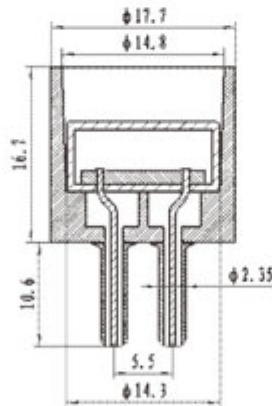


尺寸单位: mm
Dimensions in mm

25°C参数值 ELECTRO-OPTICAL CHARACTERISTICS @25°C

| 参数 Parameter | 最小值 Min. | 典型值 Typ. | 最大值 Max. | 单位 Units | 测试条件 Test Conditions |
|-------------------------------|-------------|-------------|-------------|-------------|--------------------------------|
| 亮电流 Illuminated Current | 7.5 | | 30 | mA | 12VDC 2 ftc, @ 2856 K |
| 亮电阻 Illuminated Resistance | 0.4 | | 1.6 | K Ω | 2 ftc, @ 2856 K |
| 暗电阻 Dark Resistance | 16 | | | K Ω | 0,8 sec after removal of light |
| 暗电阻 Dark Resistance | 100 | | | K Ω | 20 sec after removal of light |
| 光谱范围 Peak Wavelength | 520 | | 560 | nm | |

NSL-11932



尺寸单位: mm
Dimensions in mm

25°C参数值 ELECTRO-OPTICAL CHARACTERISTICS @25°C

| 参数 Parameter | 最小值 Min. | 典型值 Typ. | 最大值 Max. | 单位 Units | 测试条件 Test Conditions |
|-------------------------|-------------|-------------|-------------|-------------|-------------------------------|
| 亮电阻 Light Resistance | 400 | | 1600 | Ω | 2 ftc, @ 2856 K |
| 暗电阻 Dark Resistance | 100 | | | K Ω | 20 sec after removal of light |
| 光谱范围 Peak Wavelength | 520 | | 560 | nm | |

注: 1.测试前,光敏电阻在400-600 lux照度下光照60-90分钟。 2.本规格书所列型号为常规型号,可根据客户需求特别定制。 3.请在规格要求范围内使用,严禁超负荷使用。

Notes: 1.Cells are light adapted at 400 to 600 lux from 60 to 90 minutes prior testing. 2.Here listed types are common ones and customized selections available on request. 3.Please use it within the specifications requirements.No overload is allowed.